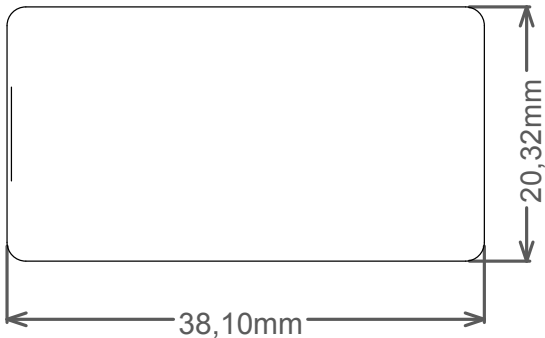
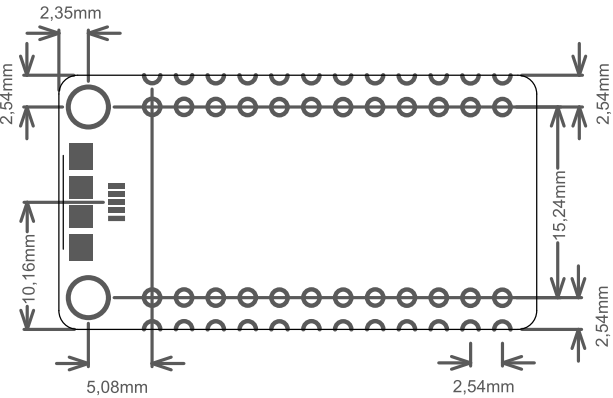
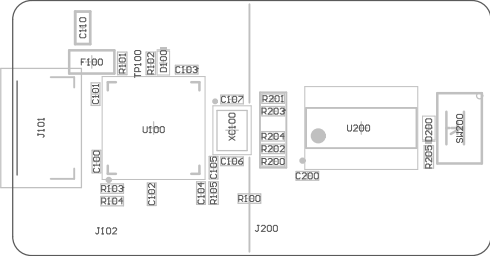


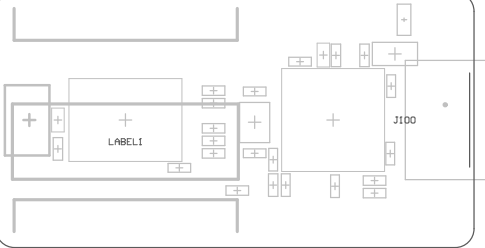
Mechanical Dimensions

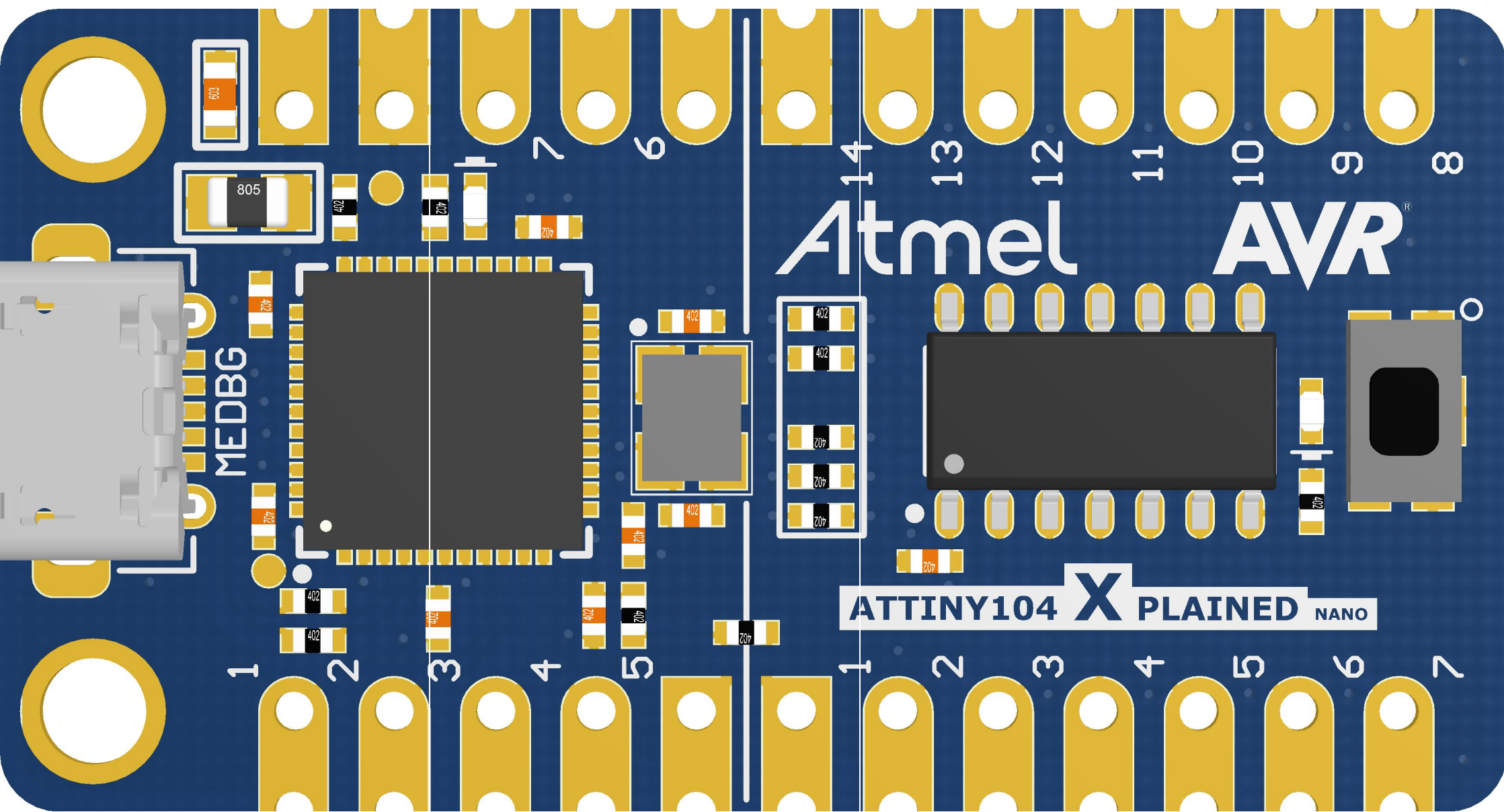


Connector Placement









PA6 PA7 PB0 PB1 PB2 PB3 GND RX TX CLK GND VUSB

Atmel Corp © 2016

PCBA LABEL

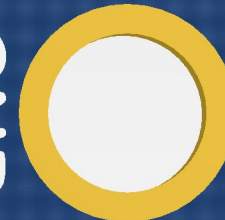
A08-2567 Rev 1

PA5 PA4 PA3 PA2 PA1 PA0 VCC VREG NC TPIC TPID RST

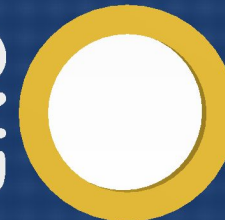
AVR[®]

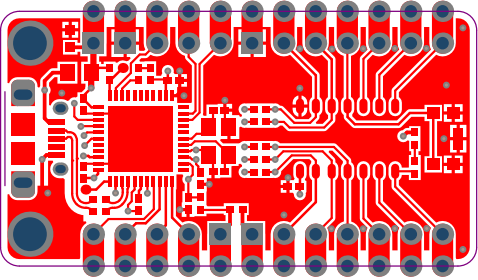


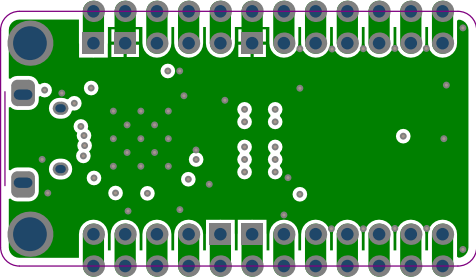
GND

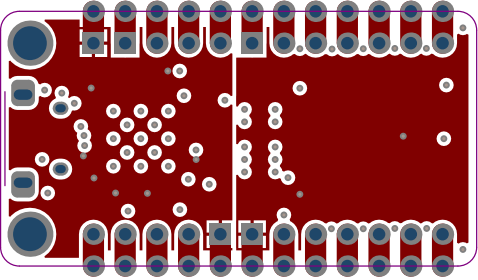


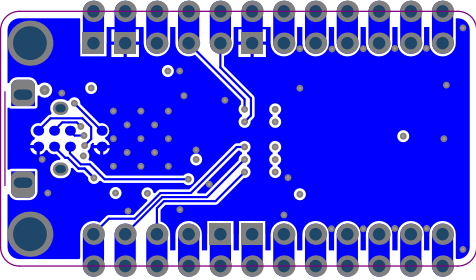
GND











Component list

ATtiny104 Xplained Nano

Source Data From:

ATtiny104_Xplained_Nano.PrjPCB

Project:

ATtiny104_Xplained_Nano.PrjPCB

Variant:

Default_assembly

Report Date: 22.02.2016 15:57:53

Print Date: 22.02.2016 15:55:46



Fitted	Designator	Quantity	Value	Manufacturer	MPN	Description
Fitted	C100, C101, C103, C104, C105, C200	6	100n	Kemet	C0402C104K4RACTU	Ceramic capacitor, SMD 0402, X7R, 16V, +/-10%
Fitted	C102	1	1u	Kemet	C0402C105K9PAC	Ceramic capacitor, SMD 0402, X5R, 6.3V, +/-10% (de26942)
Fitted	C106, C107	2	12pF	Kyocera-elco	CM05CG120J50AH	Ceramic capacitor, SMD 0402, NP0, 50V, +/-5% (de19819)
Fitted	C110	1	10uF/16V	Taiyo Yuden	EMK107BBJ106MA-T	Ceramic capacitor, SMD 0603, X5R, 16V, 10UF ± 20% (High Density)
Fitted	D100	1	SML-P11MT	ROHM	SML-P11MT-T86	LED, SMD 0402, Green, Wave length=569nm, 2.1mcd @ (1mA, 1.9Vf)
Fitted	D200	1	SML-P11YT	ROHM	SML-P11YT-T86	LED, SMD 0402, Yellow, Wave length=586nm, 7.6mcd @ (1mA, 1.9Vf)
Fitted	F100	1	MC36213	Multicomp	MC36213	Resetable PTC fuse, Ih = 0.5A, It = 1.0A, 0805 package
Fitted	FW1	1	MEDBG firmw are			MEDBG firmw are
Fitted	J101	1	ZX62D-B-5PA8	HIROSE	ZX62D-B-5PA8	Micro USB B Connector, Standard SMT + DIP
Fitted	LABEL1	1	Label PCBA (ES)	ACT Loginmark AS	505462	PCBA Label for board with ES device
Fitted	PCB1	1	ATtiny104 Xplained Nano PCB documentation			ATtiny104 Xplained Nano PCB documentation
Fitted	PCBADOC1	1	A09-2678 PCBA Files			ATtiny104 Xplained Nano PCBA documentation
Fitted	R100	1	0R	(n/a)	RMCF0402ZT0R00	RES 0.0 OHM 1/16W 0402 SMD
Fitted	R101, R105	2	100k			Thick film resistor, SMD 0402, 1/16W, 1%
Fitted	R102, R200, R201, R202, R203, R204, R205	7	1k			Thick film resistor, SMD 0402, 1/16W, 1%
Fitted	R103, R104	2	22R	Samsung	RC100SF22R0CS	Thick film resistor, SMD 0402, 1/16W, 1% (de23607)
Fitted	SW200	1	KMR221G	ITT cannon	KMR221G	Microminiature Tact Sw itch for SMT
Fitted	TEST1	1	ATtiny104 Xplained Nano test			Fixture test for ATtiny104 Xplained Nano
Fitted	TESTDOC1	1	ATtiny104 Xplained Nano Test Instructions			ATtiny104 Xplained Nano Test Instructions
Fitted	U100	1	ATmega32U4-MUR	ATMEL	ATmega32U4-MUR	ATmega32U4 QFN package
Fitted	U200	1	ATtiny104-SSNRES	ATMEL	ATTINY104-SSNRES	AVR 8-bit RISC MCU
Fitted	XC100	1	16.0MHz	Epson Toyocom	TSX-3225 16.0000MF09Z-AC3	16MHz uXtal, 3.2 x 2.5 mm SMD, CL=9pF, 15PPM, ESR=80ohm(Max.
		36				

Approved

Notes

Test Point Placement

